

Photometric Report

ERA 600 – Wide

MARTIN PROFESSIONAL R&D OPTICAL LABORATORY

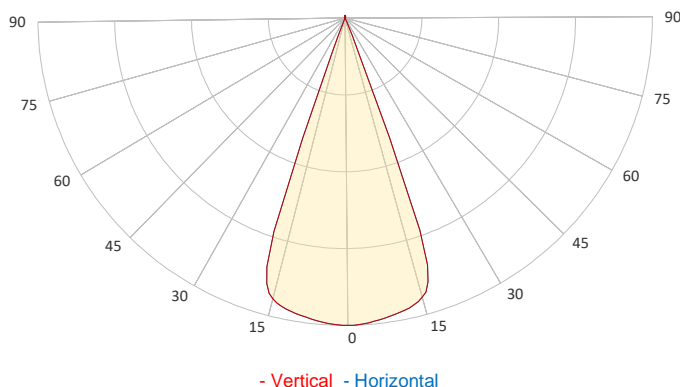
GENERAL SPECIFICATIONS

Total Fixture Output:	19000 lm
Light Engine Output:	37 klm
Efficacy:	25 lm/W
Lens Option:	N/A
Beam Angle (50%):	6-40°
Field Angle (10%):	°
Cut-off Angle (3%):	°
CRI:	70
CQS:	67
TM-30 Rf:	65
TM-30 Rg:	96
TLCI:	45
Color Temperature:	6800 K



SAMPLE MEASUREMENT

POLAR PLOT

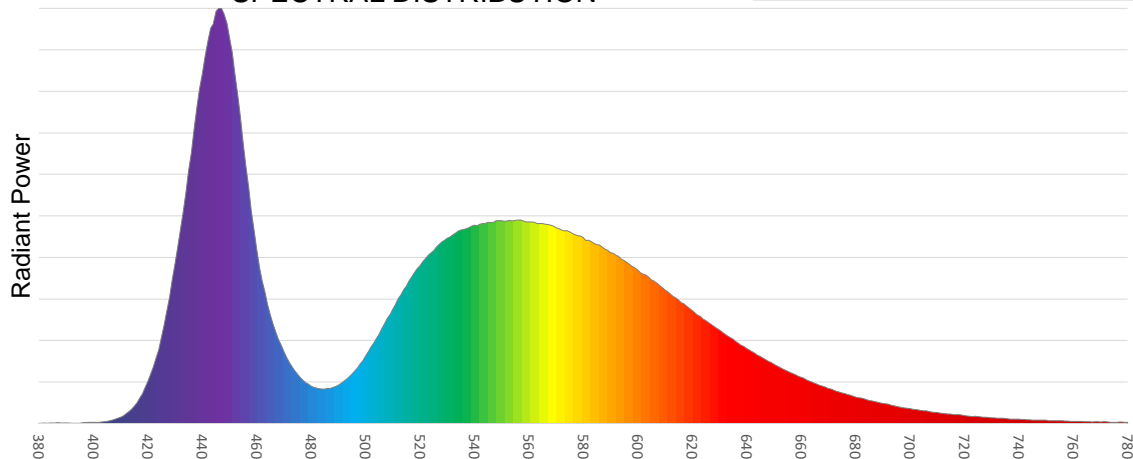


Catalog Number:	9025122049
Measured Output:	18280 lm
Measured Peak:	48975 cd
Consumed Power:	742.9 W
Efficacy:	25.4 lm/W

Beam Angle (50%):	39.5°
Field Angle (10%):	42.5°
Cut-off Angle (3%):	45.4°

Measurement Condition:	
Ambient Temperature:	25° +/- 5° C
AC Supply:	230V/50Hz
Fan Mode:	
Fixture Warm-up Time:	60 minutes

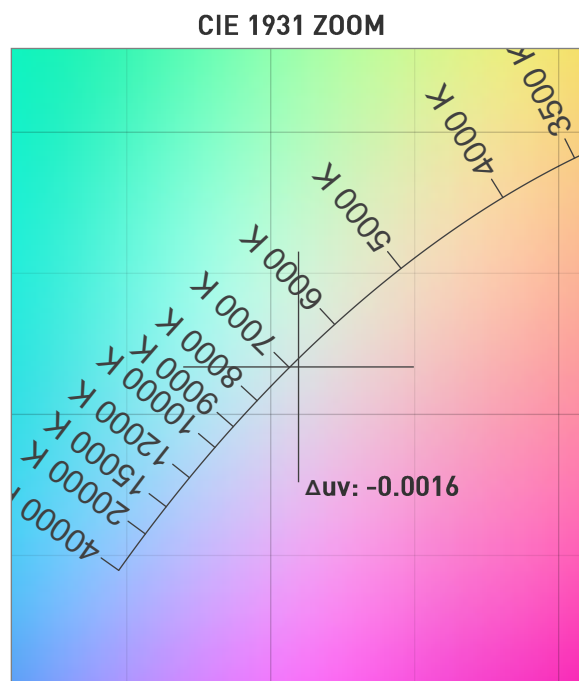
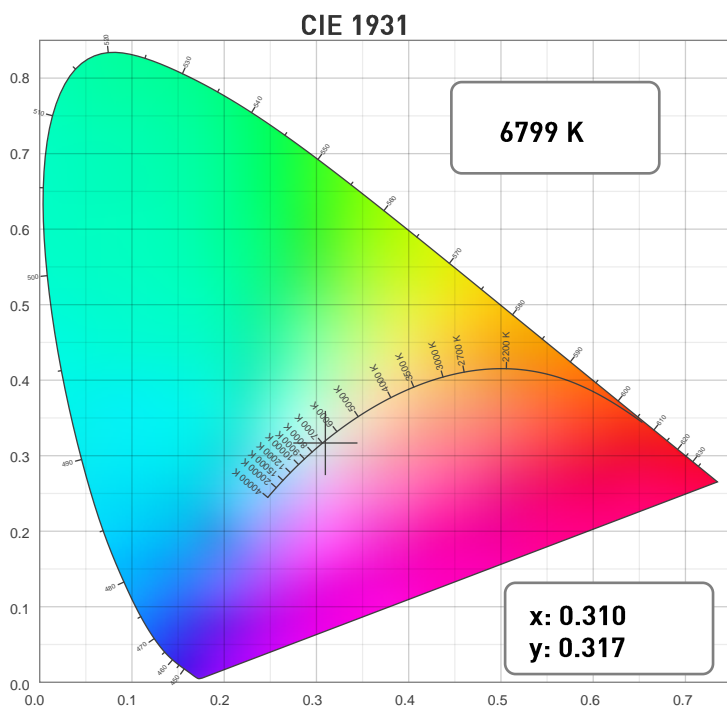
SPECTRAL DISTRIBUTION



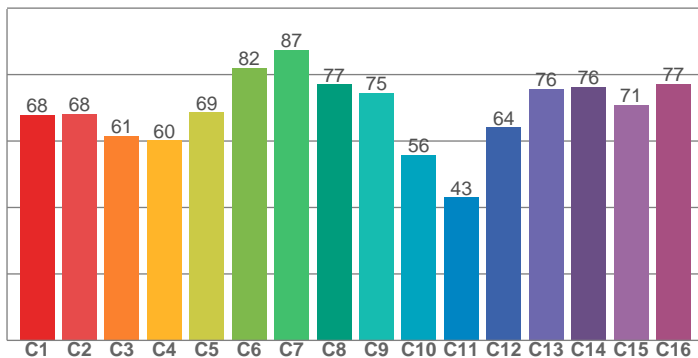
Photometric Report

ERA 600 – Wide

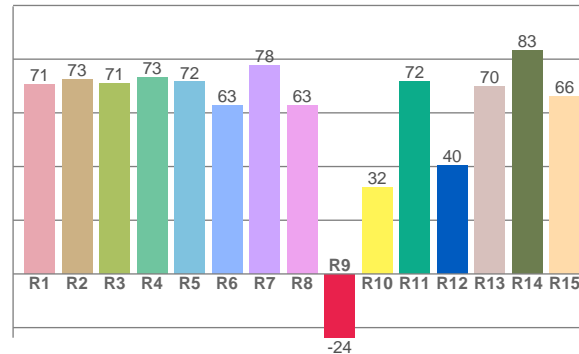
CHROMATICITY



TM30: 69.0



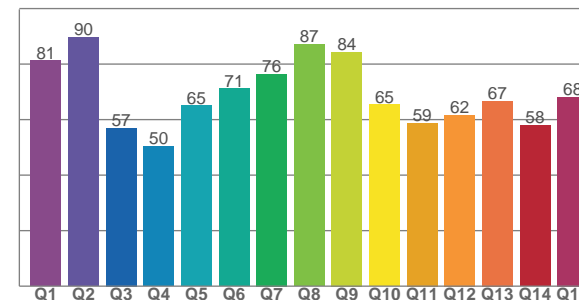
CRI: 70.3 (R1-R8)



COLOR PARAMETERS

Color Temperature	Color Rendering Index	Red Component	Color Fidelity	Color Gamut
CCT	CRI	CRI R9	TM30 Rf	TM30 Rg
6799 K	70.3	-23.8	69.0	95.5

CQS: 67.3



Television Lighting Consistency Index	Color Quality Scale	Color Coordinate CIE 1931	Color Coordinate CIE 1931	Color Coordinate CIE 1964	Color Coordinate CIE 1964	Color Deviation from Black Body
TLCI	CQS	x	y	u	v	Δuv
45	67.3	0.310	0.317	0.200	0.307	-0.0016

Photometric Report

ERA 600 – Wide

TM30

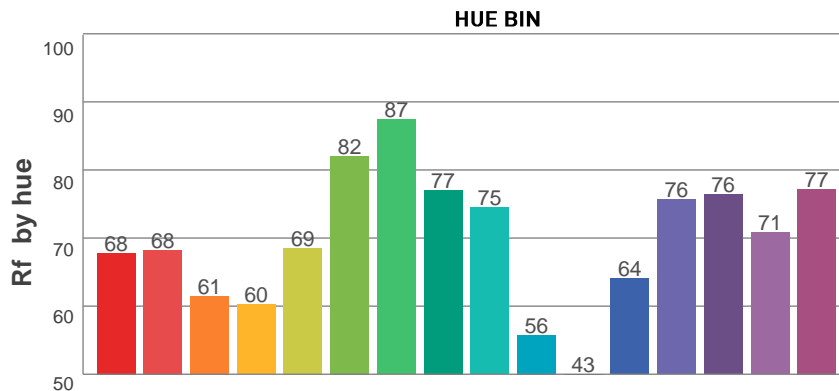
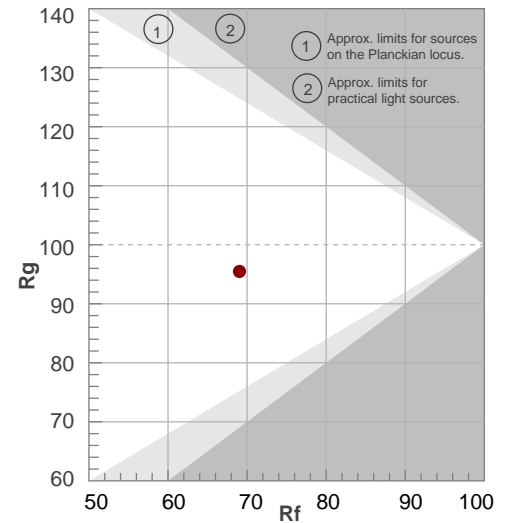
Rf 69.0

Fidelity index Rf

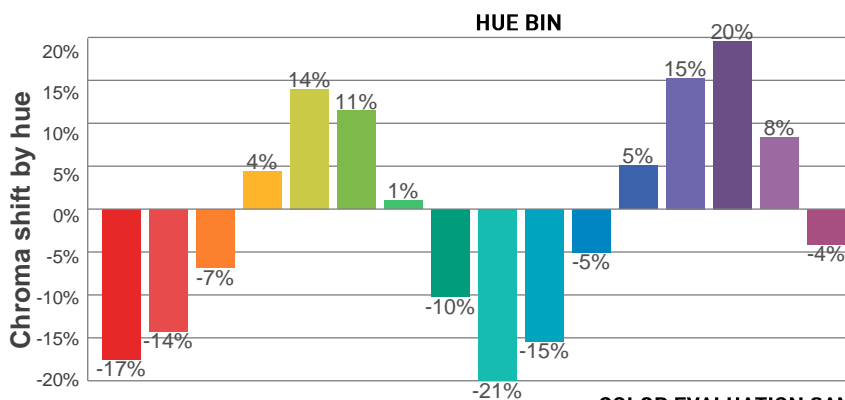
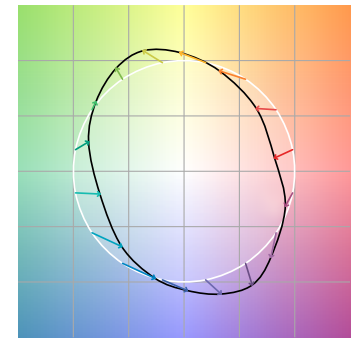
Rg 95.5

Gamut index Rg

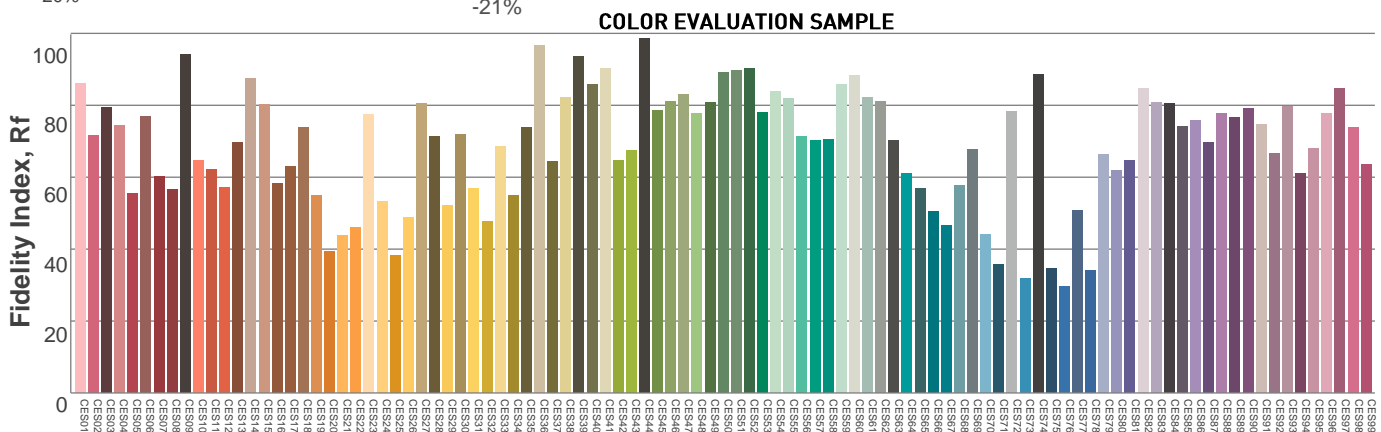
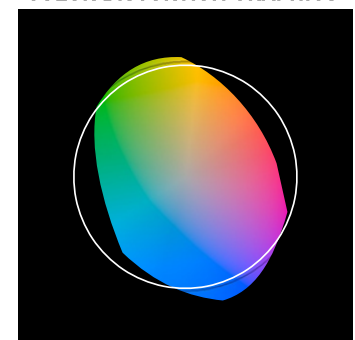
Hue Bin	Rf	Graphic shifts (%)	
		Chroma	Hue
1	68	-17%	-4%
2	68	-14%	11%
3	61	-7%	24%
4	60	4%	24%
5	69	14%	15%
6	82	11%	-1%
7	87	1%	-8%
8	77	-10%	-9%
9	75	-21%	5%
10	56	-15%	25%
11	43	-5%	32%
12	64	5%	24%
13	76	15%	11%
14	76	20%	-6%
15	71	8%	-21%
16	77	-4%	-13%



COLOR VECTOR GRAPHICS



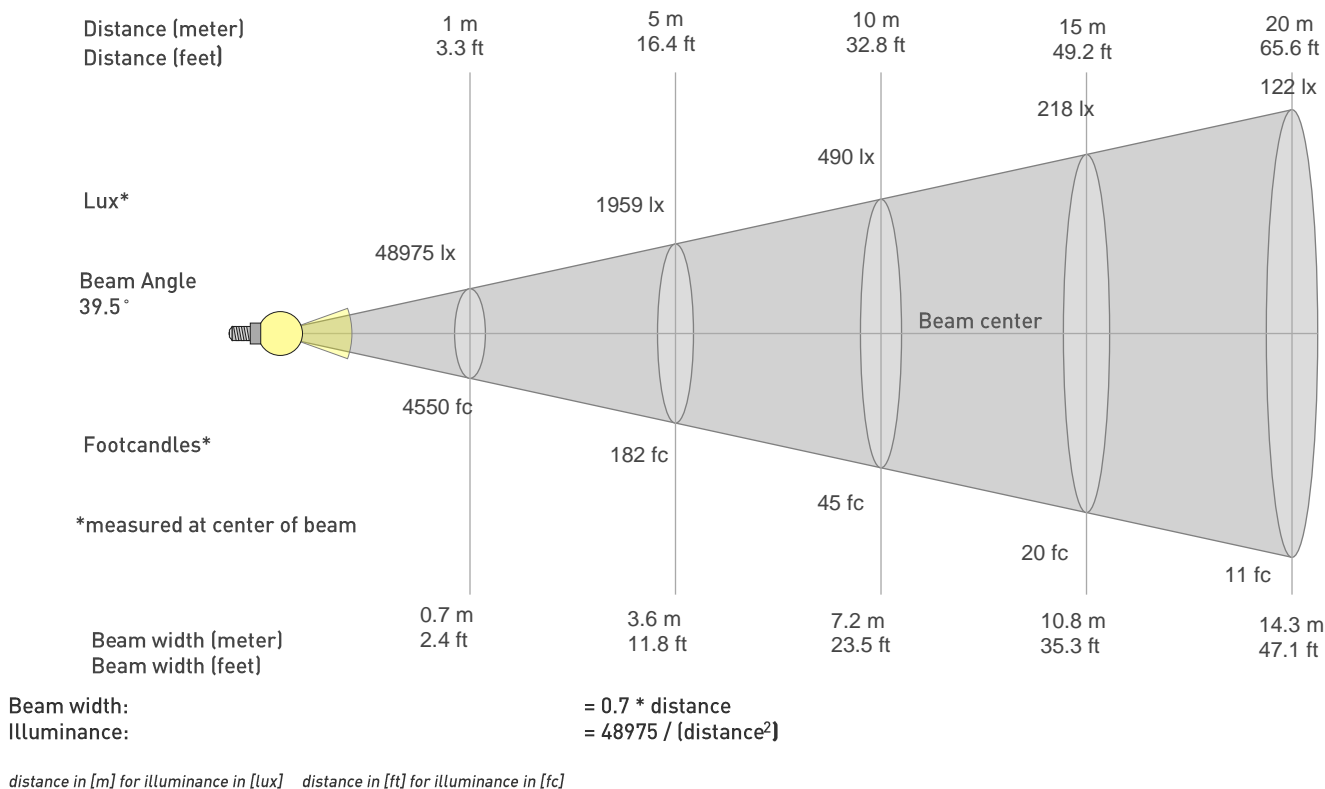
COLOR DISTORTION GRAPHICS



Photometric Report

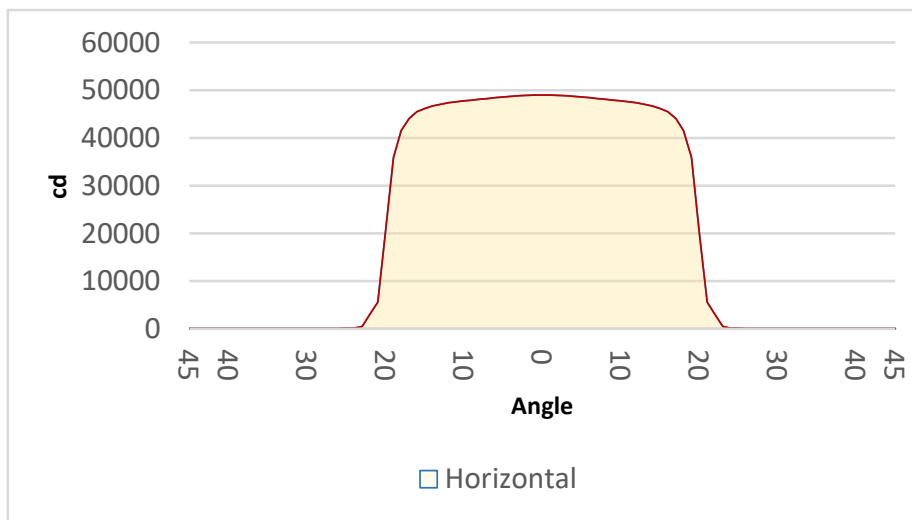
ERA 600 – Wide

BEAM DETAILS



BEAM ILLUMINANCE FROM 1-20M

1m	2m	3m	4m	5m	6m	7m	8m	9m	10m	11m	12m	13m	14m	15m	16m	17m	18m	19m	20m
3.3ft	6.6ft	9.8ft	13.1ft	16.4ft	19.7ft	23ft	26.2ft	29.5ft	32.8ft	36.1ft	39.4ft	42.7ft	45.9ft	49.2ft	52.5ft	55.8ft	59.1ft	62.3ft	65.6ft
48975lx	12244lx	5442lx	3061lx	1959lx	1360lx	999lx	765lx	605lx	490lx	405lx	340lx	290lx	250lx	218lx	191lx	169lx	151lx	136lx	122lx
4549.9fc	1137.5fc	505.5fc	284.4fc	182fc	126.4fc	92.9fc	71.1fc	56.2fc	45.5fc	37.6fc	31.6fc	26.9fc	23.2fc	20.2fc	17.8fc	15.7fc	14fc	12.6fc	11.4fc



BEAM ANGLE 50%	FIELD ANGLE 10%	CUTOFF ANGLE 3%
39.5°	42.5°	45.4°